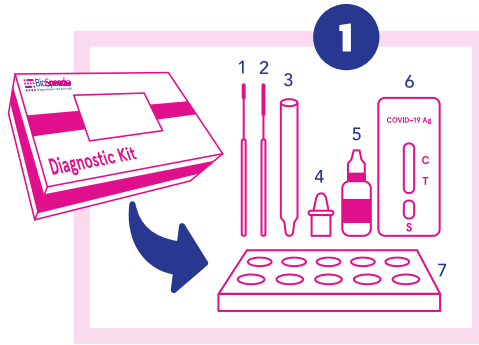


INSTRUCTIONS FOR USE

BioSpeedia COVID19
Non-Invasive Antigen Test

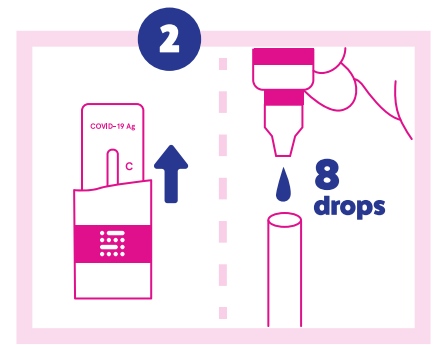
Rapid test for the diagnosis of SARS-Cov-2
coronavirus infection.

www.biospeedia.com



Remove from BioSpeedia box :

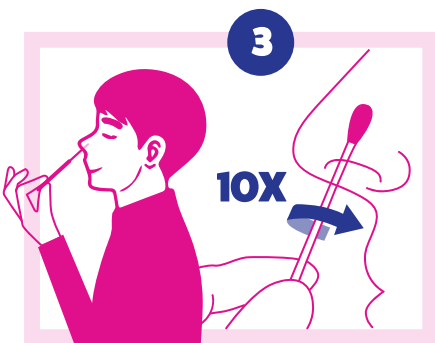
- 1 - nasal swab
- 2 - oral swab
- 3 - extraction tube
- 4 - dropper cap
- 5 - extraction buffer
- 6 - test cassette
- 7 - rack



Remove the cassette from its packaging. Place it on a clean, flat surface.

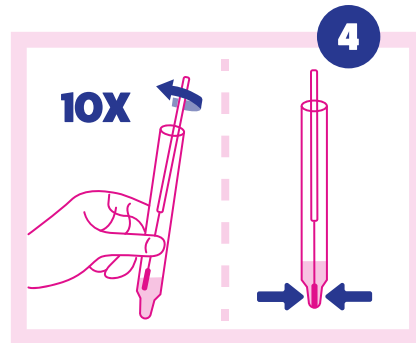
Pull out the extraction tube.

Put 8 drops of extraction buffer in the tube and place it on the rack.



Remove the nasal swab from the bag then insert the swab into the anterior part of the patient's nostril (the area between the wet and dry parts). ALL of the flocked surface must be introduced into the anterior nostril. This step should not be painful but a tear reflex may be observed.

Pinch the nostril and then position the swab against the nasal wall and gently turn the swab 10 times. The swab must touch the nasal wall (during this entire step).

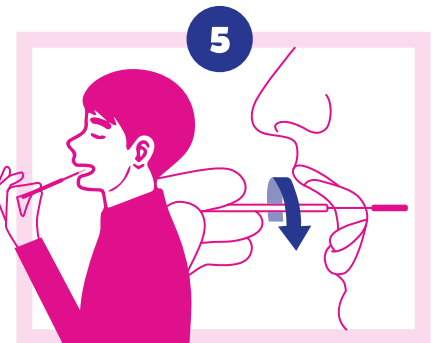


Take the tube from the rack and completely immerse the swab head in the tube.

Mix thoroughly by rotating the swab at least 10 times.

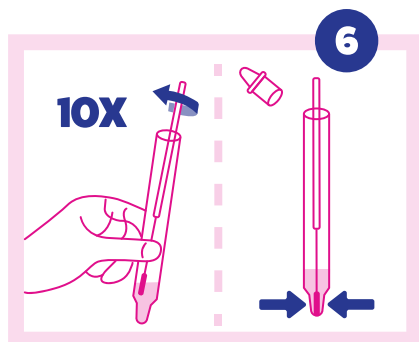
Squeeze (pinch to squeeze) the head of the swab along the inside wall of the extraction tube to retain as much solution as possible in the tube. Dispose of the swab in bleach or in a HWD and close the tube with a dropper.

Leave the swab in the extraction tube for 2 minutes.



Remove the oral swab from its packaging, collect your saliva, then put the swab in your mouth between your cheek and gum and rub back and forth on each side as if you were brushing your teeth.

Then rub your tongue, above, below, on its right and left and finally, the palate.

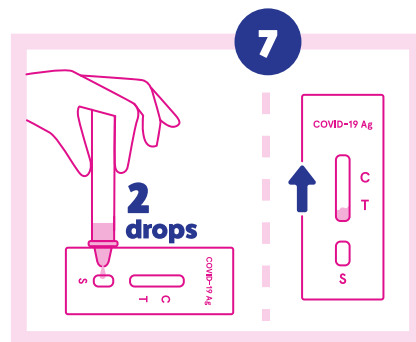


Take the tube from the rack and completely immerse the swab head in the tube.

Mix thoroughly by rotating the swab at least 10 times and leave the swab in the extraction tube for 2 minutes.

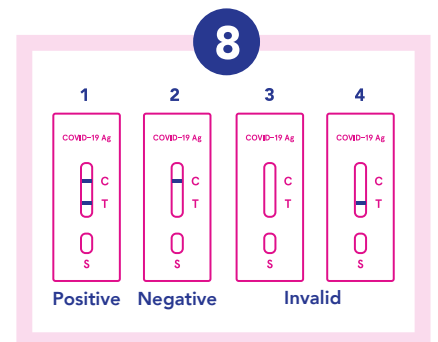
Squeeze the tube, pinching the swab head inside to squeeze out as much solution as possible from the tube.

Then discard the swab and close the extraction tube with the dropper cap.



Add 2 drops of the sample solution into the "S" well (extraction tube upright). Make sure there are no air bubbles.

The sample starts to migrate along the membrane.



After 15 minutes
you can read the result :

1 - If a second bar appears opposite the letter T, you are covid-19 positive.

2 - If no bar appears opposite the letter T, you are negative.

3 - If no bar appears opposite the letter C, the test did not work.

4 - If a bar appears only in front of the letter T, the test did not work.